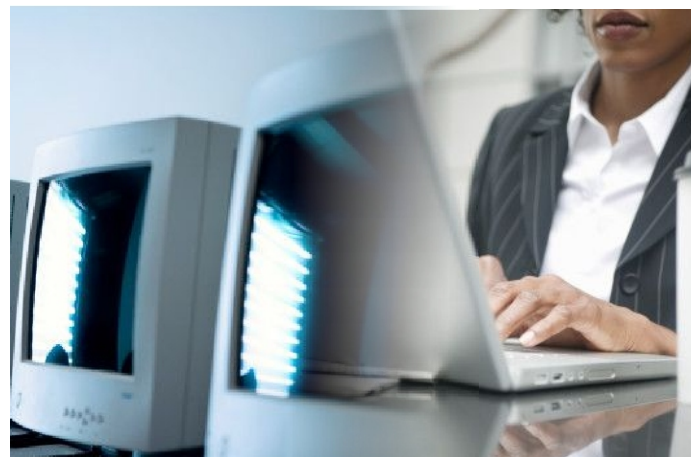


Remote Management Solution for UPS System

Need:

Active Power, a company located in Austin TX, was demanding for an engineering solution to solve a serious lack of remote management control on their UPS (uninterrupted electric power **supply** system) In one side the physical network had a serial port RS 485 which transferred the UPS data related to the status on itself in Modbus RTU. And in the other side they had a system Cimplicity (R) HMI by GE Fanuc Automation (R) to acquire the UPS data, this software communicated into Modbus TCP through a TCP port.



Equipments



EXEMYS - EGW1-MB

Solution:

We suggested our protocol converter EGW1-MB, which translates from Modbus RTU/ASCII into Modbus TCP and vice versa; this device was connected next to the UPS systems through the RS 485 port. Afterwards into the corporate LAN was connected the Ethernet plug.

The PC that was running Cimplicity (R) through a wireless network into the LAN allowing a remote virtual connectivity, as they were physically connected to the same network (point to point connection).

Initial testing was successful and Active Power Implemented our Exemys EGW1-MB as the final solution to their need of remote management into the UPS system.

